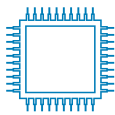




OPTIPLEX 7070 TOWER, SMALL FORM FACTOR AND MICRO

Powerful, innovative form factors fully adapt and expand to your business needs



IMPRESSIVELY POWERFUL

Intel® 9th generation processors with optional vPro™ allow the fastest, most manageable OptiPlex yet. Next gen discrete graphics, rich SSD and hard drive options power your workforce demands.



ULTIMATE EXPANDABILITY

Tool-less design with extensive scalability, including advanced M.2 PCIe NVMe SSD, optional 2nd NIC and Thunderbolt port, plus legacy support provide the most expandable desktop solution.



CONVENIENT CONNECTIONS

Support up to three monitors with two standard DisplayPorts and your choice of VGA, DP, USB Type-C Alt Mode or HDMI 2.0 as an optional third port. Drive additional monitors with discrete graphics.



SMART DESIGN

Adaptable, compact designs with custom mounts and stands seamlessly integrate into your workspace. A sustainably built, MIL-STD 810G tested form factor plus lockable cable covers and chassis intrusion switch keep you working confidently.

25 YEARS
OptiPlex

Recommended Accessories

OPTIPLEX 7070 TOWER, SMALL FORM FACTOR AND MICRO

CUSTOM STANDS AND MOUNTS



OPTIPLEX SMALL FORM FACTOR ALL-IN-ONE STAND

Small footprint mounting solution featuring integrated monitor power and Ethernet cables, as well as monitor adjustability with height, tilt, swivel and pivot functions.



OPTIPLEX MICRO ALL-IN-ONE STAND

Small footprint mounting solution adapts to your environment, with cable management and monitor height adjustability, tilt, swivel and pivot functions.



OPTIPLEX MICRO ALL-IN-ONE MOUNT FOR DELL E SERIES MONITORS

This mount allows the Micro to be VESA mounted to select Dell E Series displays.



OPTIPLEX MICRO DUAL VESA MOUNT

Mount your system between two VESA compatible devices. Includes an adapter box to securely house the system's power adapter.



OPTIPLEX MICRO DVD+/-RW ENCLOSURE

Mount your system on a wall or under a surface with full optical drive access. Includes an adapter box to securely house the system's power adapter.



OPTIPLEX MICRO VESA MOUNT

Mount your system on a wall or under a desk. Includes an adapter box to securely house the system's power adapter.

PURPOSE-BUILT SOLUTIONS



DELL 24 MONITOR - P2419H

23.8" ultrathin bezel optimized for dual display productivity. Easy Arrange feature enables multitasking efficiency and its small base frees valuable workspace.



DELL ULTRASHARP 24 MONITOR - U2419H

See details and true-to-life color on this UltraSharp monitor with virtually borderless InfinityEdge, packaged in a sleek, space saving design.



DELL WIRELESS KEYBOARD AND MOUSE - KM636

Compact design and chiclet keys, this essential desktop solution offers the convenience of wireless and clutter-free performance.



DELL WIRED MOUSE WITH FINGERPRINT READER - MS819

Wired mouse with fingerprint reader offers convenient and secure login and online access without passwords.



DELL PRO STEREO HEADSET - UC350

Communicate clearly with a headset optimized to provide in-person sound quality, certified for Microsoft Skype for Business.



OPTIPLEX CABLE COVERS

Thermally tested custom cable covers offer an easy to install and attractive way to manage cables and secure ports.



OPTIPLEX DUST FILTERS

Custom dust filters safeguard internal components in factory, warehouse, or retail environments.

Built for business

Dell Technologies Unified Workspace

Dell Technologies Unified Workspace is the most comprehensive solution to deploy, secure, manage and support virtually all devices from the cloud. We designed this revolutionary solution with intelligence and automation providing you with visibility across the entire endpoint environment. We help you save time, improve user experience, optimize resources and strengthen security.



DEPLOY

Our modern deployment solution, ProDeploy in the Unified Workspace allows you to revolutionize the way deployment gets done. By spending just one hour for set up, IT can then hand deployment to Dell and have preconfigured systems shipped directly to the end users--wherever they are.



SECURE

Dell Endpoint Security for the Unified Workspace helps you manage growing cyber risks while embracing workforce transformation. With Dell SafeGuard and Response powered by Secureworks, you gain actionable insight to help you quickly and efficiently prevent, detect and respond to cyber-attacks - keeping your environment free from harm.



MANAGE

We integrated our hardware management solution Dell Client Command Suite with VMware Workspace ONE, allowing you to take advantage of unified endpoint management (UEM) and manage the firmware, operating system and applications for all devices from the Workspace ONE console. UEM simplifies the management of the entire environment saving IT time from having to work between separate consoles for PCs and phones.



SUPPORT

ProSupport Plus continues to be the only predictive and proactive support in the market. When compared to key competitors, ProSupport Plus with SupportAssist reduced time to resolve a failed hard drive with up to 11x faster time to resolution*

*Based on a Principled Technologies test report, "Spend Less Time and Effort Troubleshooting Laptop Hardware Failures" dated April 2018. Testing commissioned by Dell, conducted in the United States. Actual results will vary. Full report: <http://facts.pt/L52XKM>

Features & Technical Specifications

OPTIPLEX 7070 TOWER, SMALL FORM FACTOR AND MICRO

Feature	OptiPlex 7070 Technical Specifications ¹
Processors ¹	Intel® Core™ i3-9100 (4 Cores/6MB/4T/3.6GHz to 4.2GHz/65W); supports Windows 10/Linux Intel® Core™ i3-9300 (4 Cores/8MB/4T/3.7GHz to 4.3GHz/65W); supports Windows 10/Linux Intel® Core™ i5-9400 (6 Cores/9MB/6T/2.9GHz to 4.1GHz/65W); supports Windows 10/Linux Intel® Core™ i5-9500 (6 Cores/9MB/6T/3.0GHz to 4.4GHz/65W); supports Windows 10/Linux Intel® Core™ i5-9600 (6 Cores/9MB/6T/3.1GHz to 4.6GHz/65W); supports Windows 10/Linux Intel® Core™ i7-9700 (8 Cores/12MB/8T/3.0GHz to 4.8GHz/65W); supports Windows 10/Linux Intel® Core™ i9-9900 (8 Cores/16MB/16T/3.1GHz to 4.9GHz/65W); supports Windows 10/Linux Intel® Celeron G4930T (2 Cores/2MB/2T/3.0GHz/35W); supports Windows 10/Linux Intel® Pentium G5420T (2 Cores/4MB/4T/3.2GHz/35W); supports Windows 10/Linux Intel® Pentium G5600T (2 Cores/4MB/4T/3.3GHz/35W); supports Windows 10/Linux Intel® Core™ i3-9100T (4 Cores/6MB/4T/3.1GHz to 3.7GHz/35W); supports Windows 10/Linux (Micro only) Intel® Core™ i3-9300T (4 Cores/8MB/4T/3.2GHz to 3.8GHz/35W); supports Windows 10/Linux (Micro only) Intel® Core™ i5-9400T (6 Cores/9MB/6T/1.8GHz to 3.4GHz/35W); supports Windows 10/Linux (Micro only) Intel® Core™ i5-9500T (6 Cores/9MB/6T/2.2GHz to 3.7GHz/35W); supports Windows 10/Linux (Micro only) Intel® Core™ i5-9600T (6 Cores/9MB/6T/2.3GHz to 3.9GHz/35W); supports Windows 10/Linux (Micro only) Intel® Core™ i7-9700T (8 Cores/12MB/8T/2.0GHz to 4.3GHz/35W); supports Windows 10/Linux (Micro only) Intel® Core™ i9-9900T (8 Cores/16MB/16T/2.1GHz to 4.4GHz/35W); supports Windows 10/Linux (Micro only)
Chipset	Intel® Q370 Chipset
Operating System Options ¹	Microsoft® Windows 10 Home (64-bit) Microsoft® Windows 10 Pro (64-bit) Microsoft® Windows 10 National Academic Ubuntu® 18.04 LTS (64-bit) Neokylin® v6.0 (China only)
Graphics Options ²	Integrated Intel® UHD Graphics 630 AMD Radeon™ R5 430, 2GB AMD Radeon™ RX 550, 4GB NVIDIA GeForce® GT 730, 2GB NVIDIA GeForce® GTX 1050, 2GB (Tower only) Dual AMD Radeon™ R5 430, 2GB Dual AMD Radeon™ RX 550, 4GB (Tower only) *Please note that discrete graphics cards are not available on Micro
Memory ^{2,3}	4 DIMM slots (2 SODIMM slots for Micro); Non-ECC dual-channel 2666Hz DDR4 SDRAM (Memory performance on Intel® Core i3 processor will be at 2400MHz). Max memory is 64GB (Tower/SFF) and 32GB (Micro) 4GB (1x4GB) 2666MHz DDR4 Memory 8GB (2x4GB) 2666MHz DDR4 Memory 8GB (1x8GB) 2666MHz DDR4 Memory 16GB (2x8GB) 2666MHz DDR4 Memory 16GB (1x16GB) 2666MHz DDR4 Memory 32GB (4x8GB) 2666MHz DDR4 Memory (Tower/SFF only) 32GB (2x16GB) 2666MHz DDR4 Memory 64GB (4x16GB) 2666MHz DDR4 Memory (Tower/SFF only) Optional Intel® Optane™ Memory 16GB
Networking ⁴	Integrated Intel I219-LM Ethernet LAN 10/100/1000 Qualcomm® QCA61x4A Dual-band 2x2 802.11ac Wireless with MU-MIMO + Bluetooth 4.2 Intel® Wireless-AC 9560, Dual-band 2x2 802.11ac Wi-Fi with MU-MIMO + Bluetooth 5 Intel® Wireless-AX 200, Dual-band 2x2 802.11ax Wi-Fi with MU-MIMO + Bluetooth 5
I/O Ports	Tower/SFF 10 External USB: 1 x USB Type-C 3.1 Gen 2; 5 x 3.1 Gen 1 Type-A (1 front, 4 rear) and 4 x 2.0(2 Type-A front (one with PowerShare), 2 Type A rear (both SmartPower On)) Micro: 6 External USB: 1 x USB Type-C 3.1 Gen 2 (front); 3 x 3.1 Gen 1 (1 Front with PowerShare/ 2 rear - One SmartPower On) 2 x 3.1 Gen 2 (Rear) 1 RJ-45 2-Displayport 1-Serial (Optional on Micro) 2-PS/2 (Optional on Micro) 1 Optional 3rd Video Port (VGA/DP/HDMI 2.0b/USB Type-C Alt Mode) 1 Universal Audio Jack 1 Line-Out
Removable Media Options	Optional 8x DVD-ROM 9.5mm ODD (Tower and Small Form Factor only) Optional 8x DVD+/-RW 9.5mm ODD (Tower and Small Form Factor only) Optional SD Media Card Reader *Optical drive on Micro available via DVD+/- RW Enclosure

Features & Technical Specifications

OPTIPLEX 7070 TOWER, SMALL FORM FACTOR AND MICRO

Feature

Storage Options^{1,5,15}

OptiPlex 7070 Technical Specifications¹

2.5 inch 500GB 5400rpm SATA Hard Disk Drive
 2.5 inch 500GB 7200rpm SATA Hard Disk Drive
 2.5 inch 2TB 5400rpm SATA Hard Disk Drive
 3.5 inch 500GB 7200rpm SATA Hard Disk Drive
 3.5 inch 1TB 7200rpm SATA Hard Disk Drive
 3.5 inch 2TB 7200rpm SATA Hard Disk Drive
 2.5 inch 256GB SATA Class 20 Solid State Drive
 2.5 inch 512GB SATA Class 20 Solid State Drive
 2.5 inch 1TB SATA Class 20 Solid State Drive
 M.2 128GB PCIe NVMe Class 35 Solid State Drive
 M.2 1TB PCIe Class 40 Solid State Drive
 M.2 2TB PCIe Class 40 Solid State Drive
 M.2 256GB PCIe NVMe Class 40 Solid State Drive
 M.2 256GB PCIe NVMe Class 35 Solid State Drive
 M.2 512GB PCIe NVMe Class 40 Self Encrypting Opal 2.0 Solid State Drive
 M.2 512GB PCIe NVMe Class 40 Solid State Drive
 M.2 512GB PCIe NVMe Class 35 Solid State Drive
 M.2 1TB PCIe NVMe Class 40 Solid State Drive
 M.2 2TB PCIe NVMe Class 40 Solid State Drive

Chassis

Form Factor	Tower	Small Form Factor (SFF)	Micro
Dimensions (H x W x D)	13.8" x 6.1" x 10.8"	11.42" x 3.7 x 11.50"	7.2" x 1.4" x 7.0"
Dimensions (H x W x D) (cm)	35 x 15.4 x 27.4	29.0 x 9.26 x 29.2	18.2 x 3.6 x 17.8
Min. Weight (lbs/kg)	17.49 / 7.93	11.57 / 5.26	2.6 / 1.18
Number of Bays (max)	1 internal 3.5" HDD 2 internal 2.5" HDD 1 internal slim ODD Optional 5.25" bay	1 x 3.5" or 2 x 2.5" HDD	1 internal 2.5" HDD
		1 internal slim ODD	
Expansion Slots	1 Full Height PCIe x16 1 Full Height PCIe x16 (wired x4) 1 Full Height PCI and 1 Full Height PCIe x 1	1 Half Height PCIe x16 1 Half Height PCIe x4 (open ended)	
	1 M.2 for wireless (22x30mm)	1 M.2 for wireless (22x30mm)	1 M.2 for wireless (22x30mm)
	1 M.2 for storage (22x80mm / 22x30mm)	1 M.2 for storage (22x80mm / 22x30mm)	1 M.2 for storage (22x80mm / 22x30mm)
Power Supply ^{1,6}	260W typical 85% Efficient PSU (80 PLUS Bronze); ENERGY STAR compliant, Active PFC 260W typical 92% Efficient PSU (80 PLUS Platinum); ENERGY STAR compliant, Active PFC 360W typical 90% Efficient PSU (80 PLUS Gold); ENERGY STAR compliant, Active PFC	200W typical 85% Efficient PSU (80 PLUS Bronze); ENERGY STAR compliant, Active PFC 200W typical 92% Efficient PSU (80 PLUS Platinum); ENERGY STAR compliant, Active PFC	90W external PSU (for 35W CPU); 130W external PSU (for 65W CPU)

Features & Technical Specifications

OPTIPLEX 7070 TOWER, SMALL FORM FACTOR AND MICRO

Feature	OptiPlex 7070 Technical Specifications ¹
Recommended accessories	<p>Monitors: qualified with select Dell UltraSharp, Professional and E series monitors</p> <p>Micro Mounting Options: Micro Vertical Stand, Micro VESA Mount, Micro Dual VESA Mount, Micro All-in-One Stand, Micro All-in-One Mount for E Series Displays, Micro DVD+/-RW Enclosure.</p> <p>Small Form Factor mounting option: Small Form Factor All-in-One Stand</p> <p>Keyboards: Dell wired keyboard with multimedia functionality, Dell Smart Card keyboard, Dell wireless keyboard</p> <p>Mouse: Dell wired mouse, Dell wireless mouse, Dell Laser mouse, Dell Wired Fingerprint Reader Mouse</p> <p>Audio Speakers: Internal Dell Business audio speaker, Dell stereo speaker systems available; Dell sound bar for select flat-panel displays. Dell Wireless Speaker System available.</p> <p>Audio Headsets: Dell Pro Stereo headsets</p>
Security Options	Trusted Platform Module ⁶ TPM 2.0, Dell Data Protection Encryption, Microsoft Windows Bitlocker, Local HDD data wipe via BIOS ("Secure Erase"), Encryption-SED HDD (Opal FIPS), Chassis lock slot support, Lockable Port Cover, Chassis Intrusion Switch, D-Pedigree (Secure Supply Chain Functionality), Setup/BIOS Password, Optional Smart Card keyboards, Intel® Trusted Execution Technology, Intel® Identity Protection Technology, Firmware support for optional Absolute Data & Device Security (formerly Computrace) ⁷ , Intel Software Guard eXtensions
Systems Management Options ⁹	Dell Client Command Suite for In-Band systems management, Optional Intel® Standard Manageability or Intel® vPro™ for Out-of-Band systems management
Environmental, Ergonomic & Regulatory Standards ¹⁰	Environmental Standards (eco-labels): ENERGY STAR, EPEAT Registered ⁹ , TCO Certified, CEL, WEEE, Japan Energy Law, South Korea E-standby, South Korea Eco-label, EU RoHS, China RoHS ¹⁴ . Please see your local representative or www.dell.com for specific details.
Warranty	Limited Hardware Warranty ¹⁰ ; Standard Next Business Day On Site Service after Remote Diagnosis ¹¹ ; Optional Dell ProSupport offers premium support from expert technicians and 24x7 availability ¹² .
Configuration Services	Factory Image load, BIOS Customization, Hardware Customization, Asset Tagging and Reporting.



OPTIPLEX 7070 TOWER, SMALL FORM FACTOR AND MICRO

**Powerful, innovative form factors fully adapt
and expand to your business needs**

Discover professional class desktops at www.dell.com/OptiPlex

1. Offering may vary by region. Some items may be available after product introduction. For complete details, refer to the Technical Guidebook published on www.dell.com.
2. System Memory and Graphics: Significant system memory may be used to support graphics, depending on system memory size and other factors.
3. 4GB or Greater System Memory Capability: A 64-bit operating system is required to support 4GB or more of system memory.
4. Particular versions of Microsoft Windows may not support the full Bluetooth 4.2 functionality.
5. Storage: GB means 1 billion bytes and TB equals 1 trillion bytes; actual capacity varies with preloaded material and operating environment and will be less.
6. PSU: This form factor utilizes a more efficient Active Power Factor Correction (APFC) power supply. Dell recommends only Universal Power Supplies (UPS) based on Sine Wave output for APFC PSUs, not an approximation of a Sine Wave, Square Wave, or quasi-Square Wave (see UPS technical specifications). If you have questions please contact the manufacturer to confirm the output type.
7. TPM is not available in all regions.
8. Absolute™ Data & Device Security: An Absolute™ offer. Some conditions apply. Terms and Conditions at www.absolute.com/legal
9. Systems Management Options: Desktop and mobile Architecture for System Hardware (DASH) - Fully enabled at point of purchase.
10. For complete listing of declarations and certifications, refer to the Dell Regulatory and Environmental Datasheet found in the Manuals section of Product Support information at www.dell.com/support/home/us/en/19
11. Please refer to www.epeat.net for specific country registration rating and participation.
12. Limited Hardware Warranty: For copy of Ltd Hardware Warranty, write Dell USA LP, Attn: Warranties, One Dell Way, Round Rock, TX 78682 or see www.dell.com/warranty
13. Onsite Service after Remote Diagnosis: Remote Diagnosis is determination by online/phone technician of cause of issue; may involve customer access to inside of system and multiple or extended sessions. If issue is covered by Limited Hardware Warranty (www.dell.com/warranty) and not resolved remotely, technician and/or part will be dispatched, usually within 1 business day following completion of Remote Diagnosis. Availability varies. Other conditions apply.
14. Dell Services: Availability and terms of Dell Services vary by region. For more information, visit www.dell.com/servicedescriptions
15. AMD and NVIDIA discrete graphics options are only available on Tower and Small Form Factor
- 16 2.5 Inch Solid State Drives are only available as a secondary storage option and can only be paired with a Solid State Drive as the Primary Storage Device.



An everyday office essential

DELL 22 MONITOR | E2216H



ESSENTIAL FEATURES

Discover the important monitor features you need to drive productivity everyday.



DEPENDABLE USABILITY

Count on our stringent quality standards that help ensure dependable performance helping minimize workforce downtime.



ECO-ELEGANT DESIGN

Eco-friendly chassis, made of more than 25% post-consumer recycled materials.



TRUSTED RELIABILITY

As the world's #1 monitor company*, we take pride in our unyielding commitment to quality and the utmost satisfaction of our customers.

Affordable, reliable, eco-friendly



ESSENTIAL FEATURES

Screen performance: View your applications, spreadsheets and more on 21.5 inches of 1920x1080 Full HD clarity with 16.7 million colors.

Versatile connectivity: Compatible with both legacy and current PCs via VGA and DisplayPort connectivity.

Tilt at will: Work comfortably by tilting the monitor 5" forward or 21" backward.



DEPENDABLE USABILITY

Uncompromised testing: Rigorous development processes help ensure consistent, reliable performance in busy POS and office environments.

Convenient controls: Easily access buttons for power, brightness, contrast and customizable preset modes on the monitor's front panel.

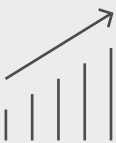
Mounting option: Create AIO-like simplicity in deployment by mounting a Dell Wyse thin client or Dell Optiplex Micro PC directly to available rear VESA mount area.



ECO-ELEGANT DESIGN

Designed with the environment in mind: BFR/PVC-free monitor (except external cables) with arsenic-free glass and mercury-free LED panel with more than 25% post consumer plastics in its chassis.

Conserve energy with PowerNap: Reduce power consumption by up to 60% with PowerNap while system is idle. ¹



DELL DISPLAY MANAGER

More ways to multitask: Work conveniently across multiple screens and select from predefined templates with the **Easy Arrange** feature on Dell Display Manager software. Quickly tile and arrange your applications and get back to work faster with **Auto-restore**, a feature that remembers where you left off.

Easily optimize your view: Automode easily configures display settings for a great front of screen experience.

Manage your display inventory: Generate an asset management report to tag display ID and settings within your business environment.



THANK YOU FOR
MAKING DELL
MONITORS
#1 WORLDWIDE*

Minimize downtime: Your monitor comes with a 3-year Advanced Exchange Service² so that if a replacement becomes necessary, it will be shipped to you the next business day during your 3-year Limited Hardware Warranty.³

Get a higher level of support: Upgrade to 24x7, in-region technical phone support from qualified engineers with Dell ProSupport option.⁴

Features & Technical Specifications

Monitor

Diagonal Viewing Size	Dell 22 Monitor – E2216H 54.61 cm (21.5 inches)
Active Display Area	
Horizontal	476.06 mm (18.74 inches)
Vertical	267.79 mm (10.54 inches)
Maximum Preset Resolution	Full HD 1920 x 1080 at 60 Hz
Aspect Ratio	16:9
Pixel Pitch	0.248 mm x 0.248 mm
Brightness	250 cd/m ² (typical)
Color Support	Color Gamut (typical): 85% ⁵ (CIE1976) Color Depth: 16.7 million colors
Contrast Ratio	1,000:1 (typical)
Viewing Angle	160° / 170°
Response Time	5 ms black-to-white (typical)
Panel Type	TN (active matrix –TFT LCD), anti-glare
Backlight Technology	LED
Optional Soundbar	AC511

Connectivity

Connectors	VGA, DisplayPort 1.2
------------	----------------------

Design Features

Adjustability	Tilt only (Typical: 5° forward or 21° backward)
Security	Security lock slot (security lock not included)
Flat Panel Mount Interface	VESA mounting support (wall mount sold separately) 100 mm x 100 mm

Power

AC input voltage/frequency/current	100 to 240 VAC/50 or 60 Hz ± 3 Hz/1.0 A (typical)
Power Consumption (Operational)	18W (typical)
Power Consumption (ENERGY STAR®)	18.2W
Power Consumption Stand by / Sleep	Less than 0.3 W

Dimensions (with stand)

Height	396.7 mm (15.62 inches)
Width	512.2 mm (20.17 inches)
Depth	180 mm (7.09 inches)

Weight

Weight (panel only – no stand)	2.84 kg (6.26 lb)
Weight (with stand)	3.63 kg (8.0 lb)
Shipping Weight	4.85 kg (10.69 lb)

Standard Service Plan

3 Years Advanced Exchange Service² & 3 Years Limited Hardware Warranty³

Optional Service Plan

Dell ProSupport⁴

Environmental Compliance

TCO Certified Displays, CECP, China Energy Label, RoHS

What's in the box?

Components

- Monitor panel
- Stand (riser and base)
- VESA trim cover

Cables

- DisplayPort cable
- Power cable

Documentation

- Quick Setup Guide
- Safety and regulatory information
- Drivers and documentation media

Adjustability and connectivity

DELL 22 MONITOR | E2216H

Easily adjust the panel to your preferred viewing position.



Back view - Cable management slot



Tilt

Connectivity

Image enlarged and cropped to show detail



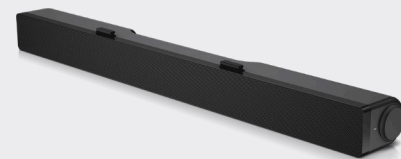
- | | |
|---------------|----------------------------|
| 1 AC power | 3 VGA |
| 2 DisplayPort | 4 Sound bar mounting slots |

RECOMMENDED ACCESSORIES



DELL DOCKING STATION (USB 3.0) D3100

Connect to any PC to this USB 3.0 universal docking station and display Ultra HD 4K resolution.



DELL SOUNDBAR - AC511

Get stereo surround sound with the Dell soundbar. Snap it snugly onto the bottom of the monitor to enjoy high-quality audio.

* Dell monitors are #1 worldwide for 6 consecutive years (2013-2018)! Source: IDC Quarterly PC Monitor Tracker, Q1 2019.

1 Based on Dell internal testing, March 2019. Actual power consumption percentages will vary by model. Available when you download Dell Display Manager <https://www.dell.com/ddm>

2 Advanced Exchange: Dell will send you a replacement monitor the next business day in most cases, if deemed necessary after phone/online diagnosis. Shipping times may vary by location and for monitors 55" and above. Fee charged for failure to return defective unit. See dell.com/servicecontracts/global.

3 For a copy of the Limited Hardware Warranty, write to Dell USA LP, Attn: Warranties, One Dell Way, Round Rock, TX 78682 or see dell.com/warranty.

4 Availability varies, please visit www.dell.com/support for details.

5 Color gamut (typical) is based on CIE1976 (85%) and CIE1931 (72%) test standards.

Dell.com/monitors Product availability varies by country. Please contact your Dell representative for more information.

© 2018 Dell. All rights reserved.

Trademarks or trade names may be used in this document to refer to either the entities claiming the marks and names of their products. Dell disclaims proprietary interest in the marks and names of others. Reproduction in any manner whatsoever without express written permission from Dell is strictly forbidden.

